



Eastburn and Gray, PC

Attorneys at Law

Marc D. Jonas

470 Norristown Road, Suite 302
Blue Bell, PA 19422
Main: 215-345-7000
Direct: 215-542-9345
Fax: 215-542-9421
mjonas@eastburngray.com

DATE OF MAILING: August 3, 2017
Sent by first class mail

Prussian Lodging, Inc.
c/o Balvant Patel
1601 North Roosevelt Avenue
Burlington, IA 52601

**Re: Upper Merion Township Zoning Hearing Board
Application No. 2017-17
Applicant: Prussian Lodging, Inc.
Property: 530 West DeKalb Pike**

Dear Mr. Patel:

This letter provides notice of the decision of the Upper Merion Township Zoning Hearing Board at the conclusion of the hearing on August 2, 2017.

The Zoning Hearing Board voted to grant a variance from section 165-168.A *Business signs* to permit a 2" inch LED light band on the existing hotel building, 99 square feet in area, resulting in total signage of 365 square feet, exceeding the maximum permitted 200 square feet of signage allowed.

The relief was conditioned as follows:

1. the LED light band shall only be illuminated from dusk to dawn;
2. the LED light band shall emit constant white light, 3500 kelvin and 23 foot-candles at the face of the light band; and
3. The LED light band shall conform strictly to the representations, testimony, and exhibits presented at the hearing and set forth in the application, including, but not limited to the construction detail plan, attached hereto.

Because this application was granted, and there were no objecting parties to the hearing, the Zoning Hearing Board will not issue an opinion with findings of fact, conclusions of law, and reasons.

August 3, 2017
Page 2

This decision is subject to a 30-day appeal period beginning on the date of entry (mailing) of this notice of decision.

The applicant is directed to section 165-257 *Expiration of special exceptions or variances* and applicable statutory provisions governing the expiration of special exceptions and variances. The applicant shall comply with other applicable Township lighting regulations.

Very truly yours,

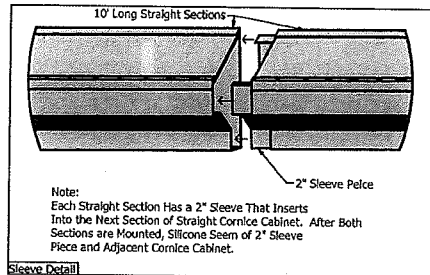
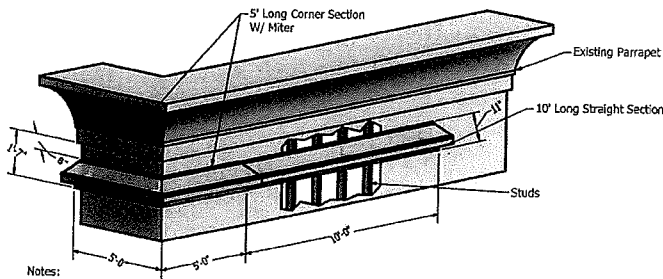


Marc D. Jonas

MDJ:mep

Enclosure: construction detail plan

cc: Mark Zadroga, Zoning Officer
Carole Kenney, Supervisor



Notes:
Shipping-
Cornice Lighting Cabinet Sections Are Shipped In Crates As:
10' Long Straight Sections W/ 2" Sleeve Piece To Insert Into Next Section.
5' Long Outside Corner Sections. Sections are Mitered For Corner.
2' Long Inside Corner Sections. Sections are Mitered For Corner.

Install-
Cornice Lighting Cabinet Sections Are Installed at All Locations Shown In Blue on Elevation Drawings.
Cornice Cabinets Are Installed Level, Maintaining 9" Below Architectural Cornice of Building (See Drawing).
Corner Sections Are Slightly Larger Than Straight Sections To Allow The Straight Sections To Slide Into The Corners For Field Adjustment. (Fabrication Note: Lens Retainers Have to Be CoPlanar Between Corner And Straight Sections.
At Termination of Cornice Cabinet Runs, The Cabinet Will Be Closed With An End Cap.

Mount Cabinets W/ 3/8" Lags Into Studs Behind Fascia. (Lag Length Determined At Time Of Survey)
Apply Silicone Bead To Entire Gap Between Top Edge Of Cornice Cabinet And Building Fascia.
At The End of Each Straight Run, The Last Straight Section Will Be Field-Cut And Slid Into The Corner Section.
Led Is Pre-Mounted Inside Cabinets. Connect The Led Wires From One Section To The Next With Wire Nuts.
Power Supply Can Be Mounted Inside Cornice Cabinet But Generally Will Be Remote. If Remote Power Supplies Will Be Mounted Inside Transformer Box on Roof.
One 60 Watt Power Supply Can Run 60' of Cornice Cabinet. Primary On Roof Provided By Others.

PROCEED TO PRODUCTION