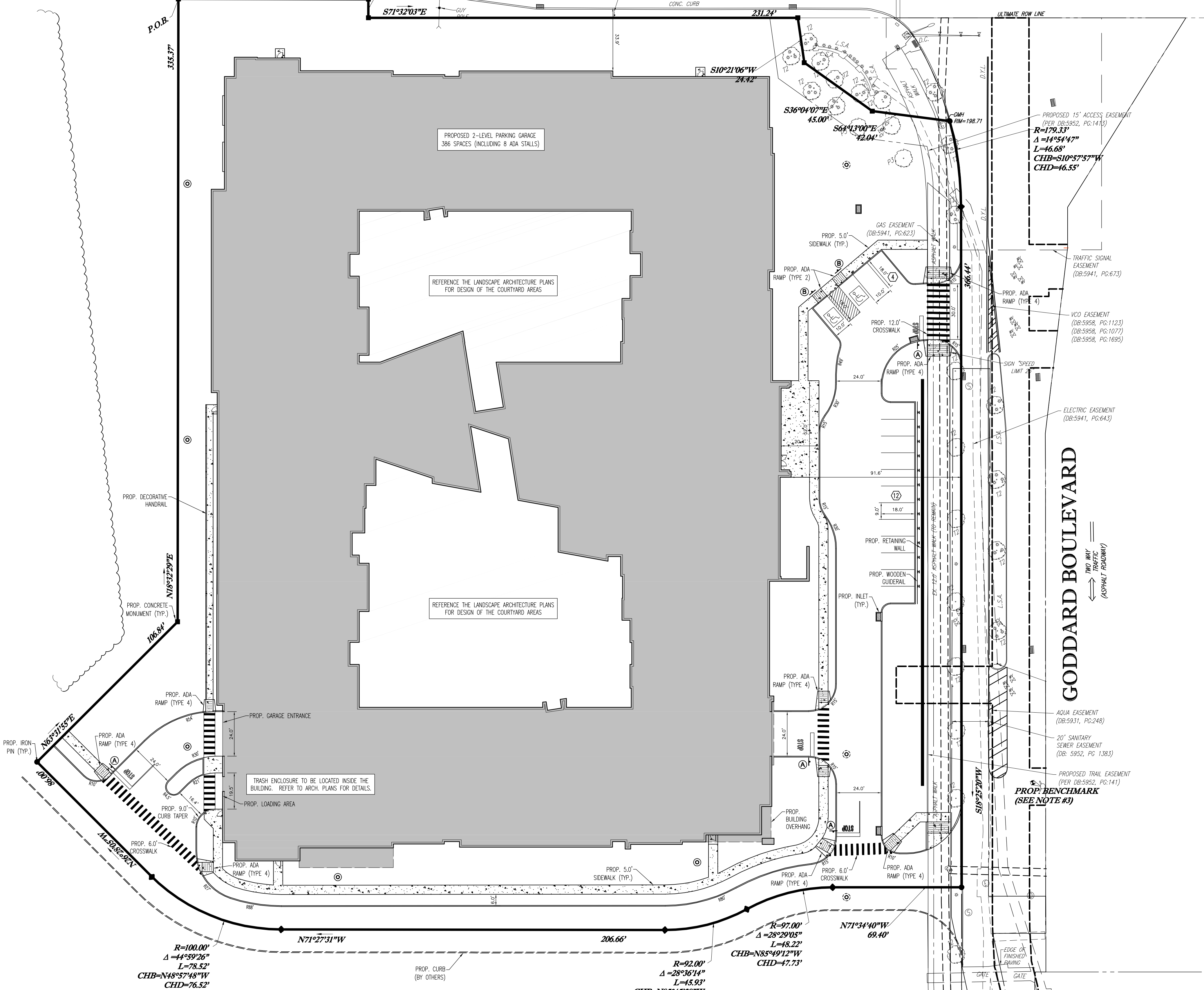
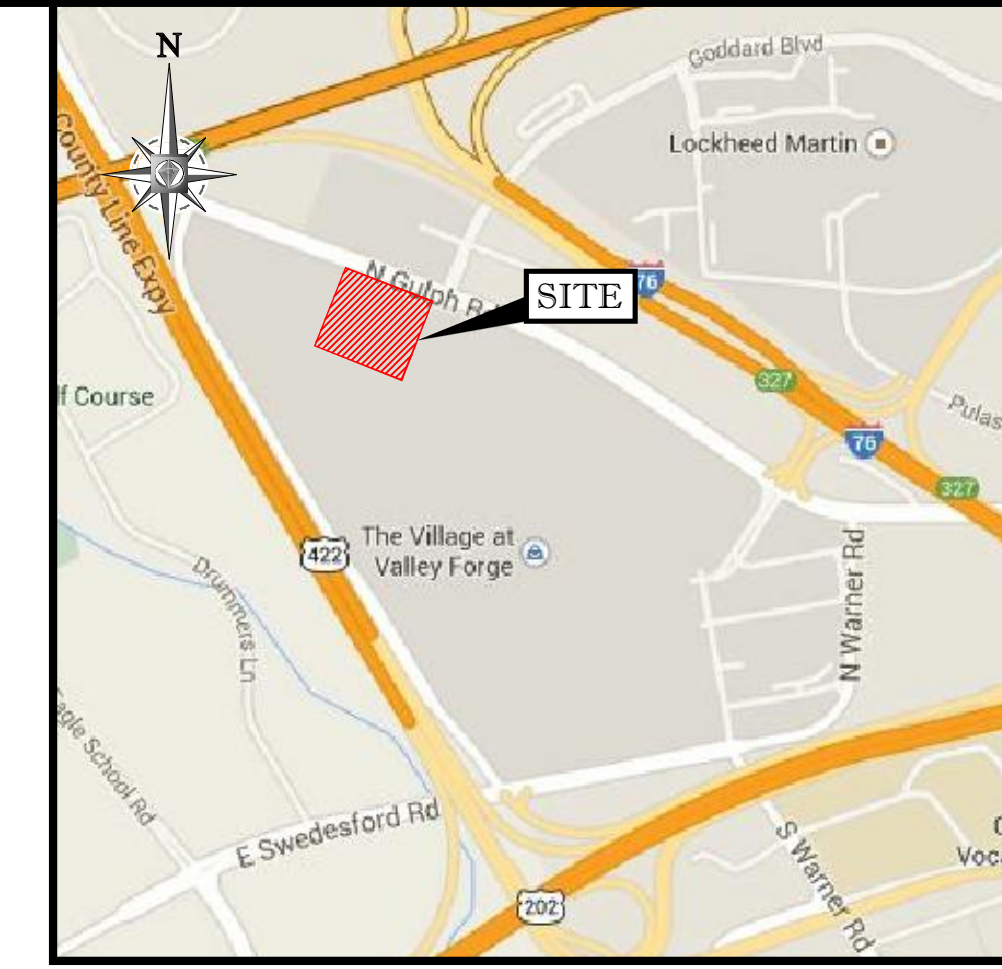


GULPH ROAD
(A.K.A. NORTH GULPH ROAD)
(A.K.A. STATE HIGHWAY ROUTE 23)
(A.K.A. S.R. 3039)
(A.K.A. L.R. 201)
(A.K.A. U.S. 202)
(VARIABLE WIDTH LEGAL R.O.W.)
(ASPHALT ROADWAY)



VALLEY GREEN DRIVE
(PROPOSED - SEE DESIGN PLANS BY GILMORE & ASSOCIATES, INC.)



LOCATION MAP
SCALE: 1"=100'

BOHLER ENGINEERING

SITE CIVIL AND CONSULTING ENGINEERING
LANDSCAPE ARCHITECTURE
TRANSPORTATION ENGINEERING
PLANNING
ENVIRONMENTAL ENGINEERING
WATER RESOURCES ENGINEERING
SURVEYING
CONSTRUCTION MANAGEMENT

PHILADELPHIA, PA
LEHIGH VALLEY, PA
NEW JERSEY
NEW YORK, NY
BALTIMORE, MD
SOUTHERN MARYLAND
TAMPA, FL
CHARLOTTE, NC
REHOBOTH BEACH, FL
CENTRAL VIRGINIA
NORTHERN VIRGINIA

REVISIONS

REV	DATE	COMMENT	BY
1	11/06/15	PER SELLER COMMENTS	PPB

CALL BEFORE YOU DIG!

PENNSYLVANIA LAW REQUIRES 3 WORKING DAYS NOTICE FOR CONSTRUCTION PHASE AND 10 WORKING DAYS IN DESIGN STAGE - STOP CALL

PAI POCS SERIAL NUMBER
1-800-242-1776 20130731155

NOT APPROVED FOR CONSTRUCTION

PROJECT No.: PP140566
DRAWN BY: P.P.B.
CHECKED BY: K.M.
DATE: 10/15/2015
SCALE: AS NOTED
CAD I.D.: PP140566_BASE-1

PRELIMINARY/FINAL LAND DEVELOPMENT PLANS

FOR

KCI VALLEY FORGE INVESTORS, LP

AVE KING OF PRUSSIA

GULPH ROAD & GODDARD BOULEVARD
UPPER MERION TOWNSHIP
MONTGOMERY COUNTY, PA

BOHLER ENGINEERING

1515 MARKET STREET, SUITE 920
PHILADELPHIA, PENNSYLVANIA 19102
Phone: (267) 402-3400
Fax: (267) 402-3401
www.BohlerEngineering.com

C. BROWN

PROFESSIONAL ENGINEER
PENNSYLVANIA LICENSE NO. PE073517

SITE PLAN (RECORD PLAN - SHEET 2 OF 3)

SHEET NUMBER: **2** OF 15

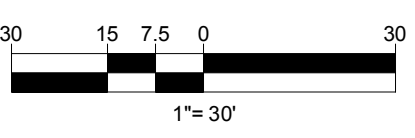
REVISION 1

PROPOSED SIGNAGE SYMBOL LEGEND

(A)	PROPOSED "STOP" SIGN (R1-1)
(B)	PROPOSED "RESERVED PARKING" SIGN (R7-8), "VAN ACC & RESERVED PARKING PENALTIES" SIGN (R7-8E)

DRAWING LEGEND

	EX. HYDRANT		EX. EDGE OF STONE		PROP. TRANSFORMER
	EX. WATER VALVE		EX. CHAIN LINK FENCE		PROP. CURB
	EX. WATER METER		EX. DEPRESSED CURB		PROP. FLUSH CURB
	EX. OVERHEAD WIRES		EX. EDGE OF CONC.		PROP. CONCRETE AREA
	EX. PROPERTY LINE		EX. EDGE OF PAVEMENT		PROP. BUILDING
	EX. ADJACENT PROPERTY LINE		EX. GUY WIRE		PROPOSED A.D.A. RAMP
	EX. LEGAL ROW LINE		EX. SANITARY/SEWER MANHOLE		PROPOSED PEDESTRIAN CROSSING
	EX. UTILITY POLE		EX. DRAINAGE/STORM MANHOLE		PROPOSED NUMBER OF PARKING SPACES
	EX. STREET LIGHT		EX. SOLID WHITE LINE		PROPOSED INLET
	EX. TRAFFIC SIGNAL POLE		EX. S.P.L.		15' ACCESS EASEMENT
	EX. SIGN		EX. DOUBLE YELLOW LINE		PROPOSED STORM SEWER MANHOLE
	EX. POST		EX. DASHED WHITE LINE		PROPOSED SANITARY MANHOLE
	EX. TELEPHONE MANHOLE		EX. DASHED YELLOW LINE		PROPOSED WOODEN GUIDERAIL
	EX. UNKNOWN MANHOLE		EX. BELGAN BLOCK CURB (TYP.)		PROPOSED CONCRETE MONUMENT
	EX. WATER MANHOLE		EX. CONCRETE AREA		PROPOSED IRON PIN
	EX. CATCH BASIN OR INLET				
	EX. DECIDUOUS TREE & TRUNK SIZE				



P:\140566\140566_LAYOUT.DWG SITE
 P:\140566\140566_LAYOUT.DWG SITE
 P:\140566\140566_LAYOUT.DWG SITE