

GENERAL NOTES

- EXISTING TOPOGRAPHIC INFORMATION ON THIS PLAN IS BASED ON AN ACTUAL FIELD SURVEY PERFORMED BY ANDERSEN ENGINEERING ASSOCIATES ON SEPTEMBER 11-12, 2006. BASED ON DATA PROVIDED ON A PLAN ENTITLED GENERAL SITE PLAN WITH 2005 SURVEY DATA, PREPARED BY SMITHKLINE BEECHAM PHARMACEUTICALS, ROAD ENGINEERING, 709 SWEDLAND ROAD, KING OF PRUSSIA, PA, 19406, (610)270-5261. DATUM BASED UPON BGS (NGVD23). BOUNDARY INFORMATION DERIVED FROM OVERALL SITE PLAN, ENGINEERING, 709 SWEDLAND ROAD, KING OF PRUSSIA, PA, 19406, (610)270-5261, DATED 11/02/94. ENGINEERS, INC. (OWG 15912), DATED 11/02/94.
- THE LANDPLATS SHOWN HEREON WERE DIGITIZED FROM AERIAL PHOTOGRAPHS DATING BACK SEVERAL DECADES. THE ROADWAYS IN AND AROUND THE LANDPLATS WERE BACK-CALCULATED FROM THE PHOTOGRAPHS AND THE ROADWAYS WERE CONTOURED TO FIT THE PHOTOGRAPHS. ROADWAYS SHOULD NOT BE USED FOR ENGINEERING PURPOSES WITHOUT FIELD VERIFICATION.

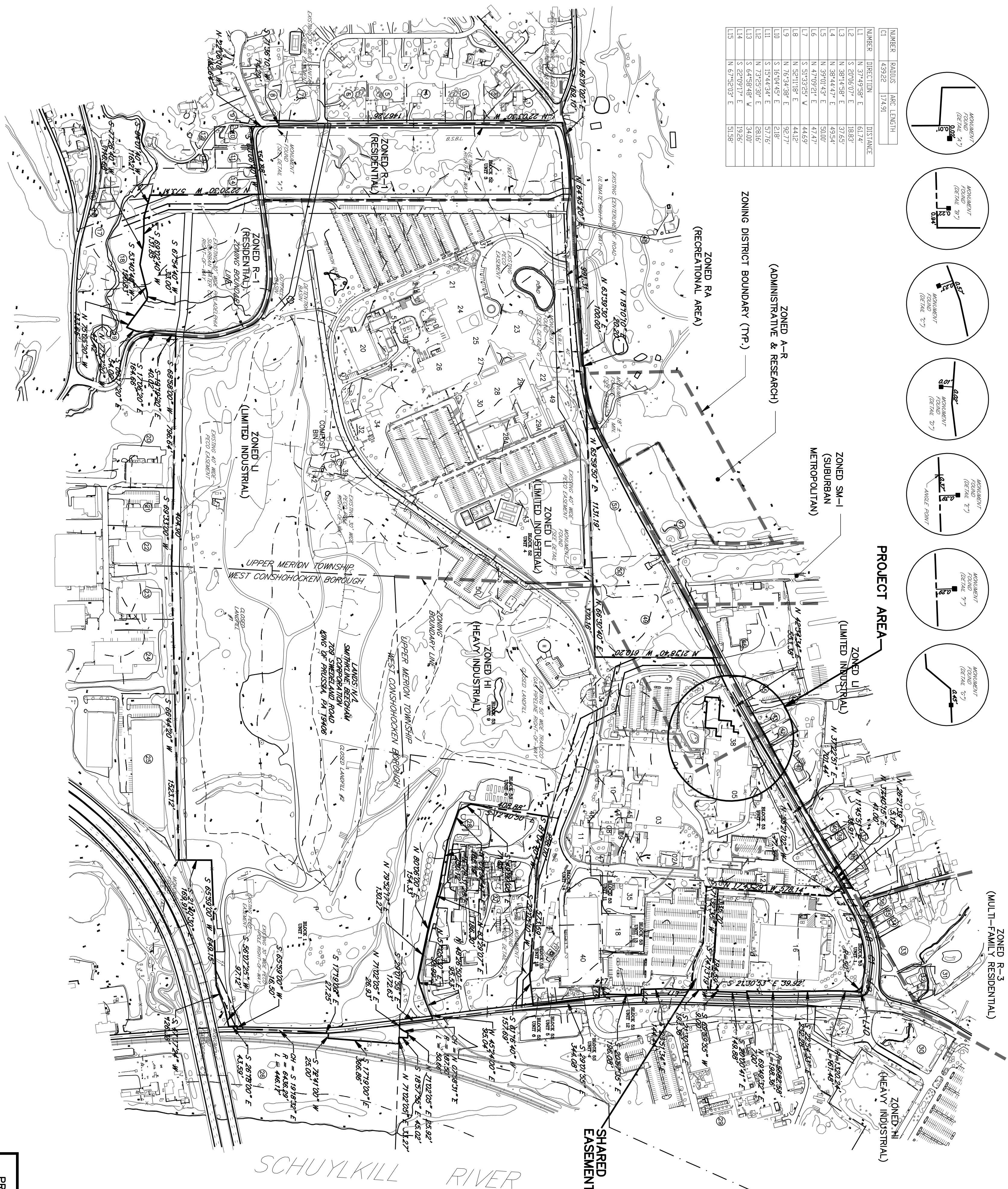
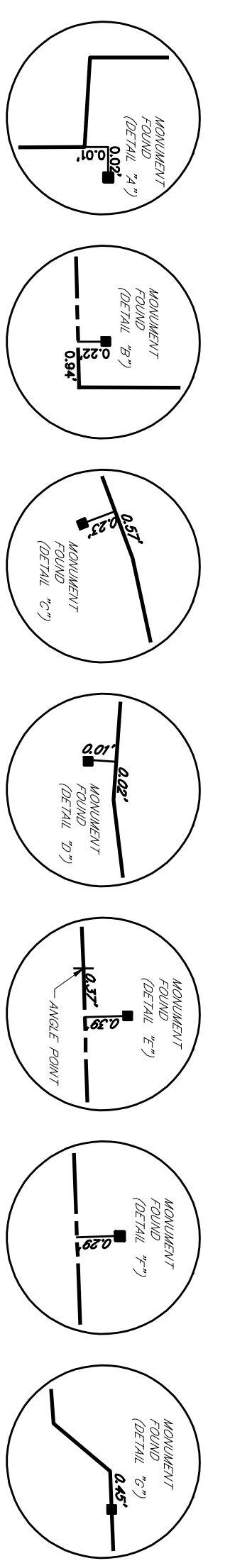
EXISTING BUILDING IDENTIFICATION

| NUMBER | FEATURE | DIR. | TYPE | LENGTH |
|--------|---|------|------|--------|
| 01 | MANUFACTURING (FORMERLY CHECO) | | | |
| 02 | BIOLOGICAL SCIENCES (EAST, ROAD OPERATIONS) | | | |
| 02A | TEMPORARY OFFICE COMPLEX | | | |
| 03 | PATHOLOGY AND TOXICOLOGY | | | |
| 04 | RESEARCH AND DEVELOPMENT | | | |
| 05 | MOLECULAR GENETICS | | | |
| 08 | HIGH PRESSURE LABORATORY | | | |
| 09 | REACTOR LABORATORY | | | |
| 10 | BIOPHARMACEUTICAL DEVELOPMENT | | | |
| 11 | SYNTHETIC CHEMISTRY PILOT PLANT AND ERL | | | |
| 12 | GAS/FIPE PUMP HOUSE | | | |
| 13 | GLASSHOUSE (CENTRAL) | | | |
| 14 | ELECTRIC SUBSTATION #1 | | | |
| 15 | ELECTRIC SUBSTATION #2 | | | |
| 16 | ANTI-BACTERIAL MANUFACTURING | | | |
| 17 | PRE-TREATMENT FACILITY | | | |
| 18 | SITE SERVICES PLANT | | | |
| 20 | CENTRAL UTILITIES PLANT | | | |
| 21 | CHEMICAL AND CELL SCIENCES/PHARM. RESEARCH | | | |
| 21A | CHILLER BUILDING | | | |
| 22 | WEST CAMPUS OFFICE BUILDING | | | |
| 23 | RESEARCH AND DEVELOPMENT ADMINISTRATION | | | |
| 24 | MEDICAL CHEMISTRY | | | |
| 25 | PHARMACOLOGY | | | |
| 26 | BIOLOGICAL SCIENCES (WEST) | | | |
| 27 | DRUG METABOLISM/ARI FACILITY | | | |
| 28 | SYNTHETIC CHEMISTRY | | | |
| 28A | TRAILER OFFICE COMPLEX | | | |
| 29 | PHARMACEUTICAL TECHNOLOGIES | | | |
| 29A | PHARMACEUTICAL TECHNOLOGIES | | | |
| 30 | ANALYTICAL/PLASMA CHEMISTRY | | | |
| 31 | GLASSHOUSE (WEST) | | | |
| 32 | METHANE RECOVERY PLANT | | | |
| 33 | GLASSHOUSE (EAST) | | | |
| 34 | BUILDING 32 FUEL OIL STORAGE | | | |
| 35 | ENVIRONMENTAL CONTROL BUILDING | | | |
| 36 | ELECTRIC SUBSTATION (WEST) | | | |
| 37 | METHANE RECOVERY PLANT COMPRESSOR BUILDING | | | |
| 38 | BIOPHARMACEUTICAL ROAD FACILITY | | | |
| 39 | METHANE WAGUUM PLANT | | | |
| 40 | BIOPHARMACEUTICAL MANUFACTURING FACILITY | | | |
| 41 | BUILDING 40 ELECTRICAL SUBSTATION | | | |
| 42 | ATHLETIC COMPLEX RESTROOMS | | | |
| 44 | BUILDING 3 FUEL OIL STORAGE | | | |
| 45 | BUILDING 3 FORMALIN WASTE STORAGE | | | |
| 46 | BUILDING 11 VACUUM PUMP BUILDING | | | |
| 47 | DRUM STORAGE FACILITY | | | |
| 48 | DRUM STORAGE FACILITY | | | |
| 49 | DRUM STORAGE FACILITY | | | |
| 50 | FITNESS CENTER | | | |
| 51 | ELECTRICAL SUBSTATION (CHILLER UNITS) | | | |
| 53 | CHILLER ENCLOSURE | | | |

SITE SYMBOLS/LINE/TYPER LEGEND

| | |
|----------------------------|-----|
| EXISTING PROPERTY LINE | --- |
| ADJOINERS PROPERTY LINE | --- |
| TAXMAP PARCEL LINE | --- |
| ZONING BOUNDARY | --- |
| EXISTING RIGHT-OF-WAY LINE | --- |
| EXISTING EASEMENT LINE | --- |
| BUILDING SET BACK LINE | --- |
| LIMITS OF CLOSED LANDFILL | --- |
| EXISTING EDGE OF ROAD | --- |
| EXISTING CURB | --- |
| EXISTING CONTOUR LINE | --- |
| EXISTING FENCE | X |

| NUMBER | DIRECTION | ANGLE | LENGTH |
|--------|---------------|-------|--------|
| 1 | N 37°49'58" E | 61.74 | |
| 2 | S 80°45'07" E | 18.83 | |
| 3 | N 88°14'58" E | 27.85 | |
| 4 | N 89°01'42" E | 50.00 | |
| 5 | N 47°09'21" E | 47.47 | |
| 6 | S 51°31'25" W | 44.69 | |
| 7 | N 85°34'38" E | 92.77 | |
| 8 | N 85°34'38" E | 29.82 | |
| 9 | S 60°49'21" E | 23.82 | |
| 10 | N 85°34'38" E | 23.82 | |
| 11 | N 85°34'38" E | 23.82 | |
| 12 | N 85°34'38" E | 23.82 | |
| 13 | S 44°56'48" W | 34.00 | |
| 14 | S 22°09'17" E | 19.26 | |
| 15 | N 67°52'02" E | 51.58 | |



| PROPERTY TAX MAP IDENTIFICATION | BOROUGH OF WEST CONSHOHOCKEN BLOCK 1 UNIT 1 | UPPER MERION TOWNSHIP BLOCK 52 UNITS 3,4 UNITS 1,2,3,4,5,6,8 UNITS 9,10,12,13,14 UNITS 18,19 |
|---|---|--|
| OVERALL EXISTING FEATURES PLAN BUILDING #38 | | |

ANDERSEN ENGINEERING ASSOCIATES INCORPORATED
 306 NORTH 9TH STREET, PERKASIE, PA
 (215) 257-5711
 AEA JOB NO.: 4924
 AEA FILE NO.: 4924OVERALL
 DRG BY: P.C.A. DWG BY: T.L.C.

ClaxosmithKline
 R & D PROJECTS ENGINEERING AND DESIGN
 709 SWEDLAND ROAD
 KING OF PRUSSIA, PA 19406
 (610) 270-5261
 UPPER MERION WEST CAMPUS
 UPPER MERION TWP., MONTGOMERY CO.
 AS NOTED
 DATE: 3/20/08
 SCALE: 00-000-003