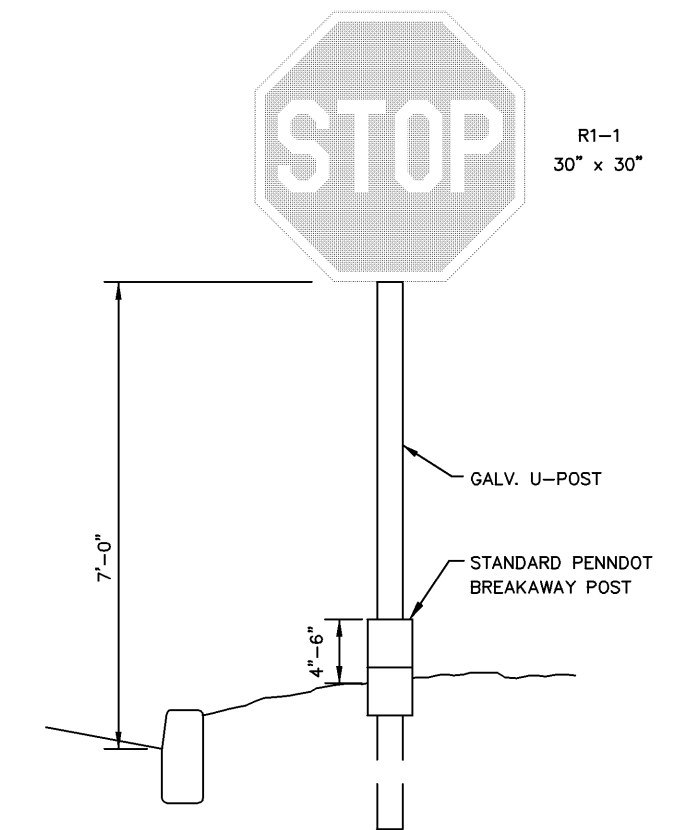
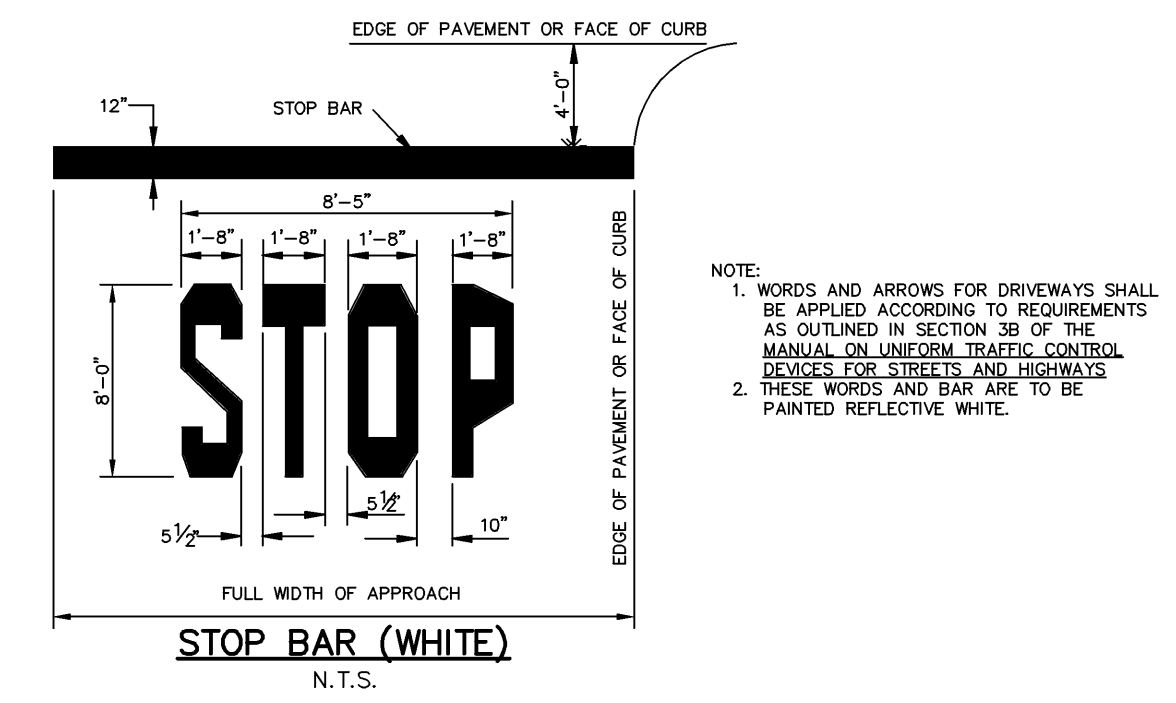
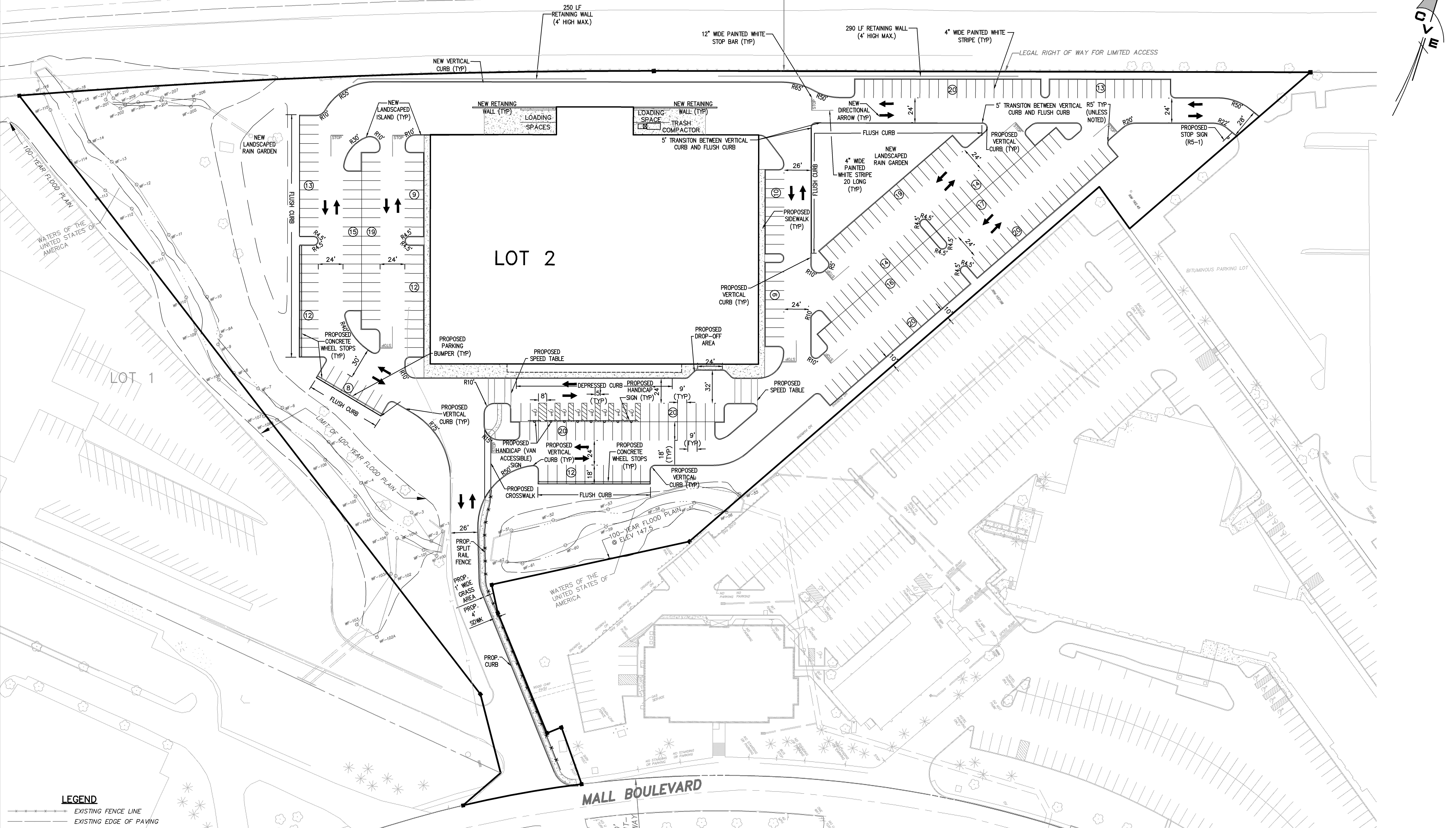


OWNER & APPLICANT  
MPO PROPERTIES, LLC  
1 GEOFFREY WAY  
WAYNE, NEW JERSEY 07470  
TEL: 973-517-5910

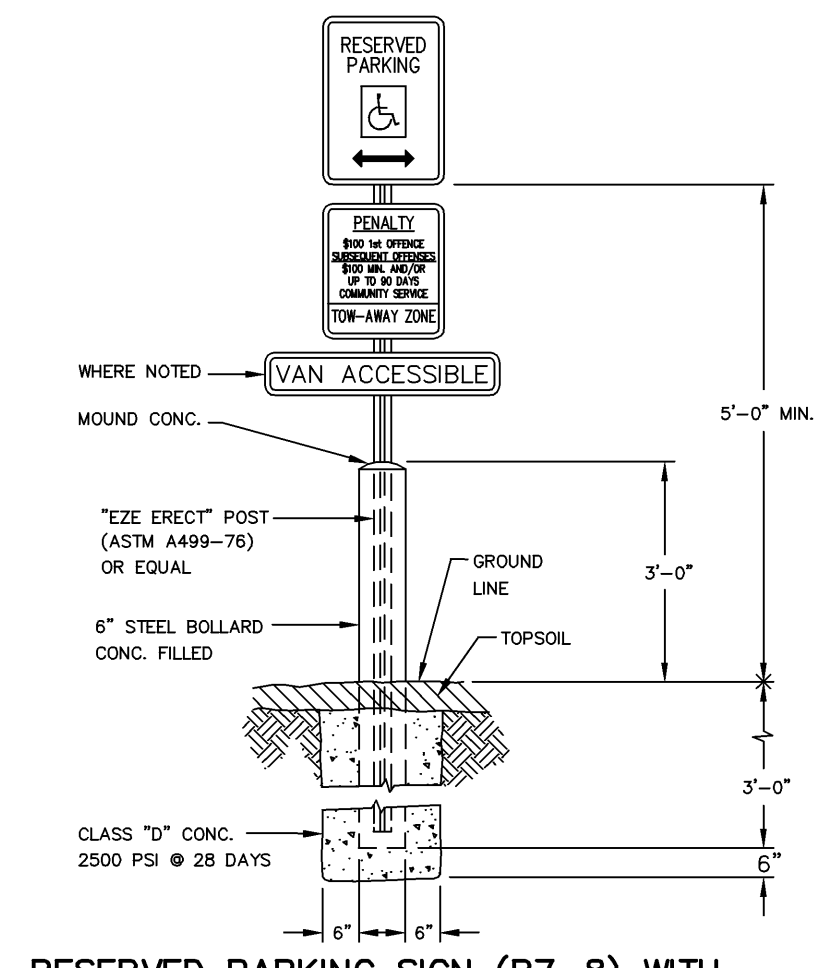
### PENNSYLVANIA TURNPIKE



INSTALLATION, DIMENSIONS, COLORS AND DETAILS OF VARIOUS SIZE SIGNS, SHIELDS AND ACCESSORY PANELS TO FOLLOW STANDARDS IN THE CURRENT "STANDARD HIGHWAY SIGNS PUBLICATION" AND THE CURRENT "MANUAL ON UNIFORM TRAFFIC CONTROL DEVICES FOR STREETS AND HIGHWAYS".

NOTE: ALL SIGNS SHALL BE IN ACCORDANCE WITH DEPT. OF TRANSPORTATION STANDARDS.

STOP SIGN LOCATION DETAIL (R1-1)  
N.T.S.



RESERVED PARKING SIGN (R7-8) WITH VAN ACCESSIBLE SIGN (R7-8A)  
N.T.S.

- EXISTING FENCE LINE
- EXISTING EDGE OF PAVING
- EXISTING GUIDE RAIL
- EXISTING CURB
- FLOOD PLAIN
- EXISTING LIGHT POLE
- STREAM LINE
- EXISTING SIGN
- EXISTING DECIDUOUS TREE
- EXISTING CONIFEROUS TREE
- EXISTING TREE & SHRUB LINE
- PROPOSED HANDICAPPED PARKING
- PROPOSED CURB

**LEGEND**

NOTE TO USER OF THESE PLANS: THE INFORMATION CONTAINED ON THIS PLAN WAS PREPARED BY CHESTER VALLEY ENGINEERS, INC. FOR THE PROJECT OF THE CLIENT. CHESTER VALLEY ENGINEERS, INC. DOES NOT WARRANT THE ACCURACY OF THE INFORMATION CONTAINED ON THIS PLAN. THE USER ASSUMES ALL RISK OF ANY AND ALL DAMAGES, INCLUDING REASONABLE ATTORNEY'S FEES, ARISING FROM THE USE OF THE INFORMATION CONTAINED ON THIS PLAN.

**COPYRIGHT**

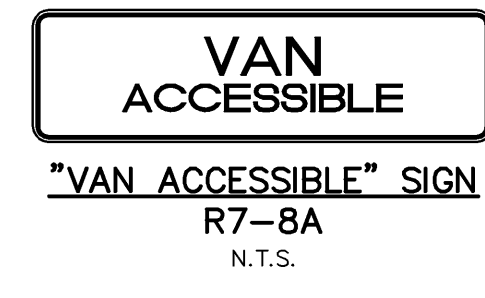
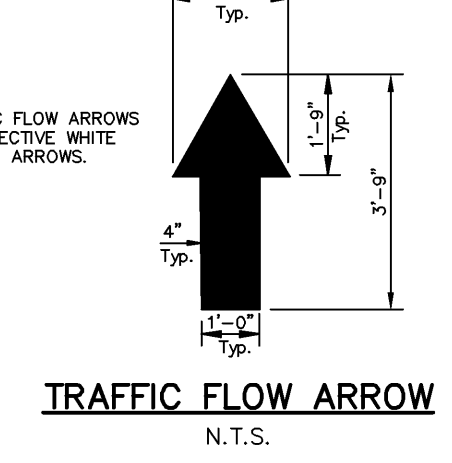
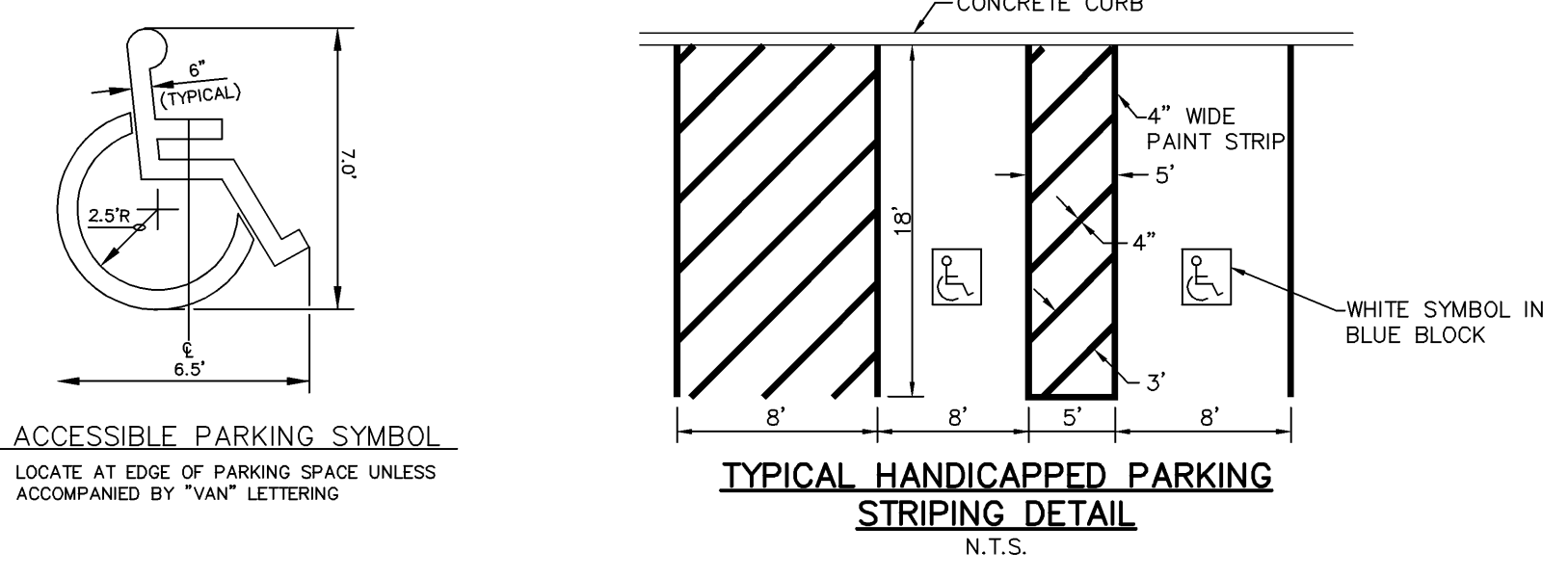
CHESTER VALLEY ENGINEERS, INC., CIVIL ENGINEERS & SURVEYORS, RESERVES ITS COMMON LAW COPYRIGHT AND ALL OTHER RIGHTS IN THESE PLANS. ALL DRAWINGS, SPECIFICATIONS OR ORGANIZATION USING OR RELYING ON THESE PLANS MUST CONTACT CHESTER VALLEY ENGINEERS, INC. FOR PERMISSION TO REPRODUCE OR TRANSMIT IN ANY FORM OR BY ANY MEANS, INCLUDING PHOTOCOPYING, RECORDING, OR BY ANY INFORMATION STORAGE AND RETRIEVAL SYSTEM. WITHOUT THE WRITTEN PERMISSION OF CHESTER VALLEY ENGINEERS, INC., NO PART OF THESE PLANS MAY BE REPRODUCED OR TRANSMITTED IN ANY FORM OR BY ANY MEANS, INCLUDING PHOTOCOPYING, RECORDING, OR BY ANY INFORMATION STORAGE AND RETRIEVAL SYSTEM.

**PENNSYLVANIA ACT 187 REQUIREMENTS**

CHESTER VALLEY ENGINEERS, INC. UNDERSTANDS AND AGREE THAT IT IS THE USER'S RESPONSIBILITY TO OBTAIN ALL NECESSARY PERMITS AND APPROVALS FROM THE APPROPRIATE AGENCIES AND AUTHORITIES BEFORE COMMENCING ANY WORK DESCRIBED IN THESE PLANS. CHESTER VALLEY ENGINEERS, INC. DOES NOT WARRANT THE ACCURACY OF THE INFORMATION CONTAINED ON THIS PLAN. THE USER ASSUMES ALL RISK OF ANY AND ALL DAMAGES, INCLUDING REASONABLE ATTORNEY'S FEES, ARISING FROM THE USE OF THE INFORMATION CONTAINED ON THIS PLAN.

**EXCAVATIONS, TRENCHING AND SHORING**

CHESTER VALLEY ENGINEERS, INC. IS NOT A LICENSED PROFESSIONAL ENGINEER OR SURVEYOR. CHESTER VALLEY ENGINEERS, INC. DOES NOT WARRANT THE ACCURACY OF THE INFORMATION CONTAINED ON THIS PLAN. THE USER ASSUMES ALL RISK OF ANY AND ALL DAMAGES, INCLUDING REASONABLE ATTORNEY'S FEES, ARISING FROM THE USE OF THE INFORMATION CONTAINED ON THIS PLAN.



**SITE PLAN**

NO. \_\_\_\_\_ DATE \_\_\_\_\_ REVISION \_\_\_\_\_

**PRELIMINARY/FINAL LAND DEVELOPMENT PLAN**  
FOR  
**TOYS 'R' US**  
**250 MALL BOULEVARD**  
UPPER MERION TOWNSHIP - MONTGOMERY COUNTY - PENNSYLVANIA

Chester Valley Engineers, Inc. PROJECT NO. 18431  
Main Office: 83 Chestnut Road  
P.O. Box 447, Pott, PA 19301  
(610) 844-4622  
Civil engineers & land surveyors  
Chester Valley Engineers, Inc. (810) 888-3143 Fax  
http://www.cve.com (610) 844-4622  
http://www.chesterv.com

SCALE	DATE	DRAWN BY	CHECKED BY	DRAWING
1" = 50'	05/19/08	HMG	NJC	

Scale in Feet  
0 10 20 30 40 50 100 150 200  
1" = 50'

ASSESSMENT MAP 58: BLOCK 27, UNITS 57 AND 81