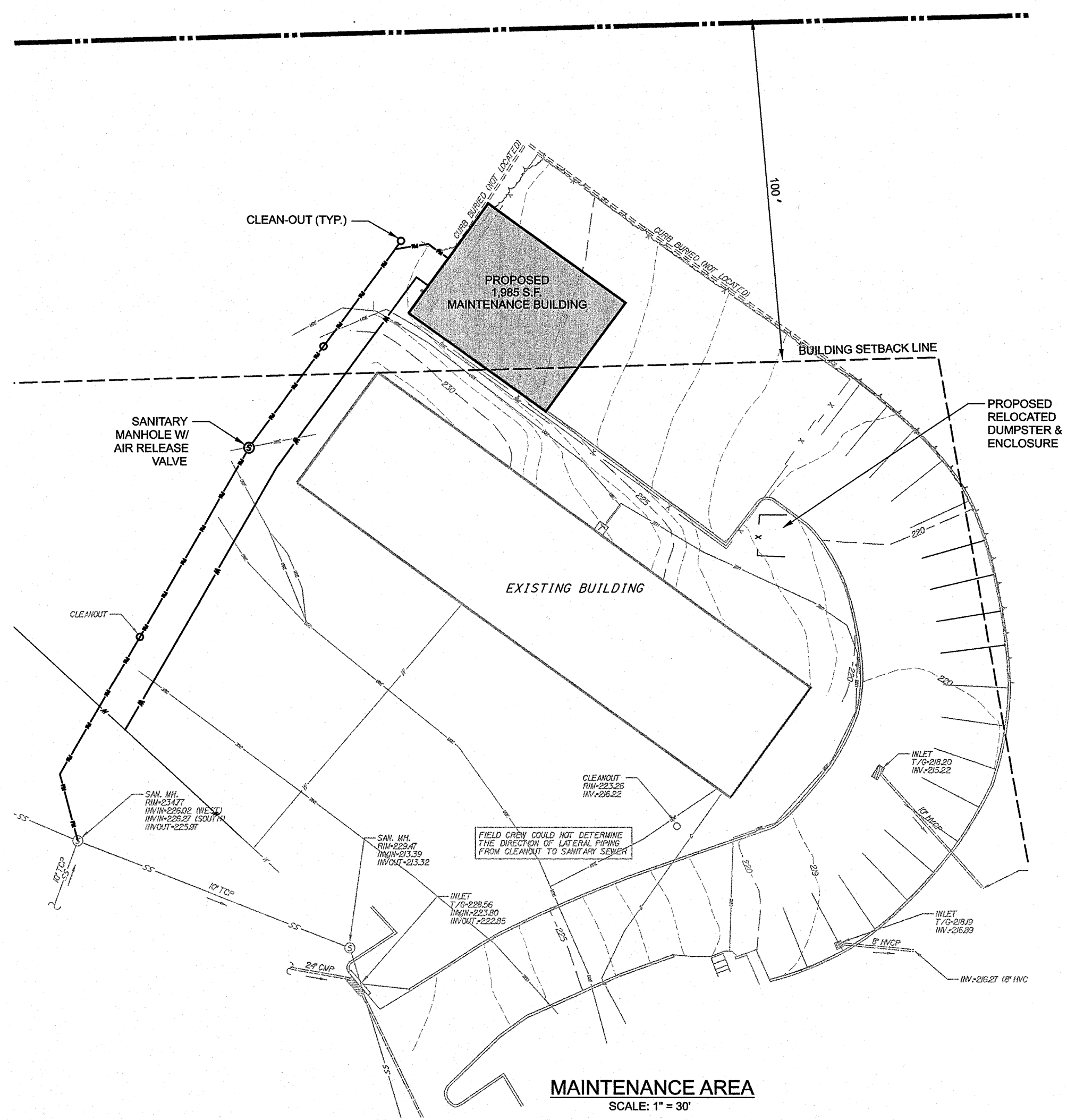
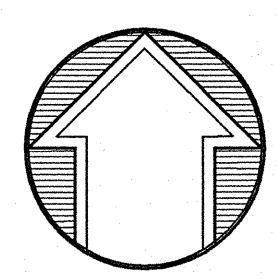
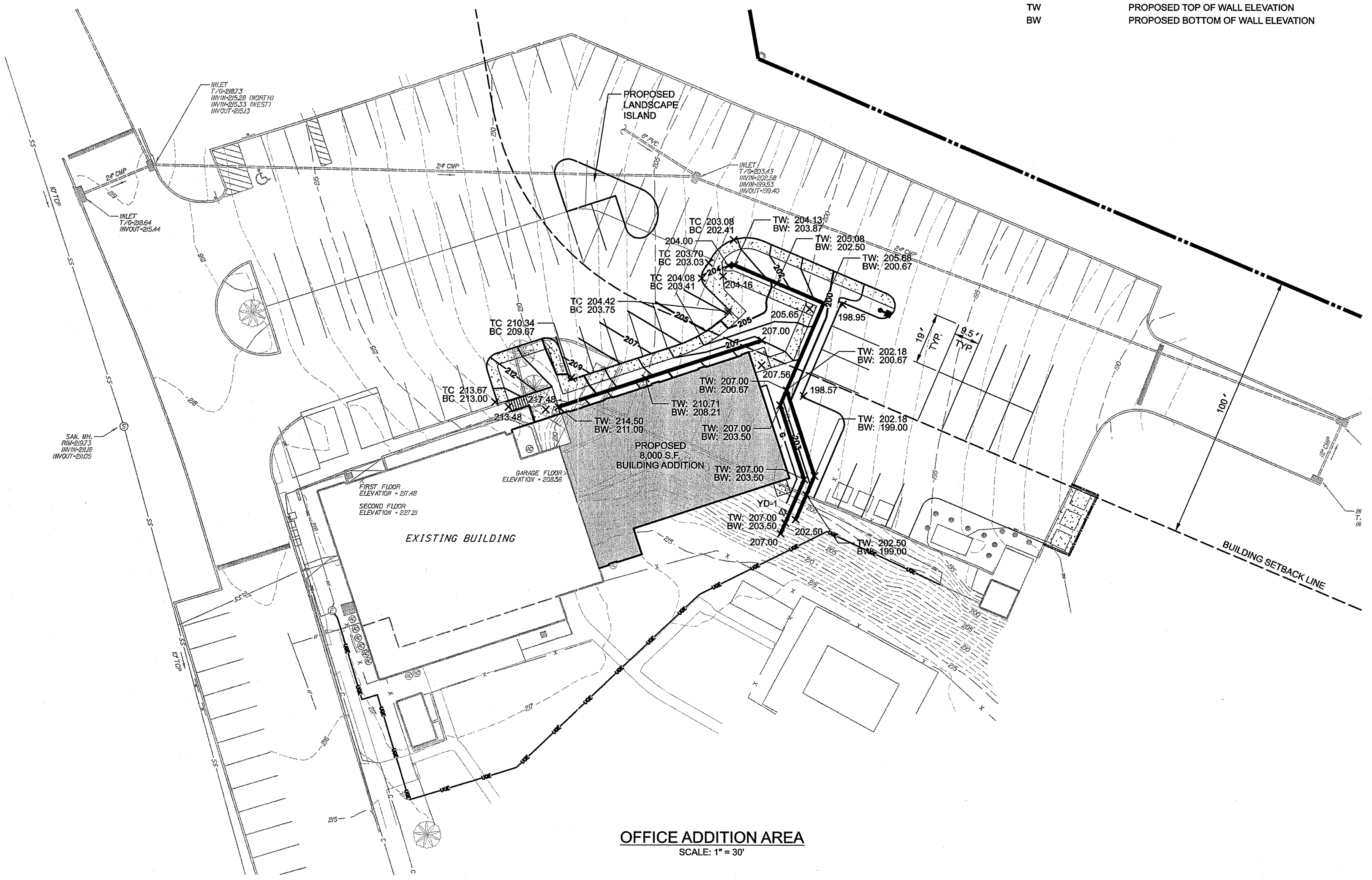


KEY MAP



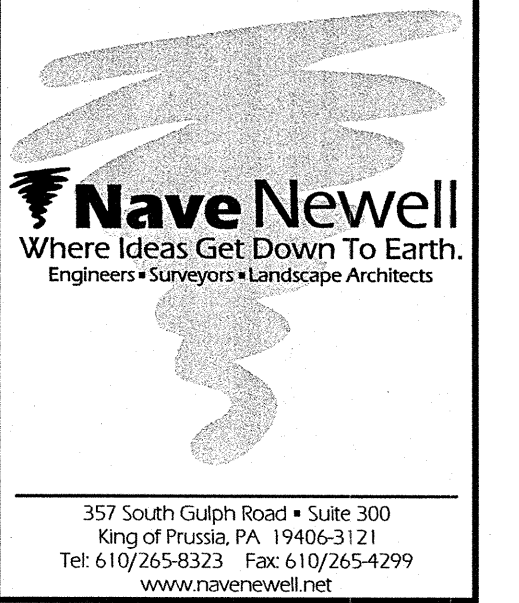
MAINTENANCE AREA
SCALE: 1" = 30'



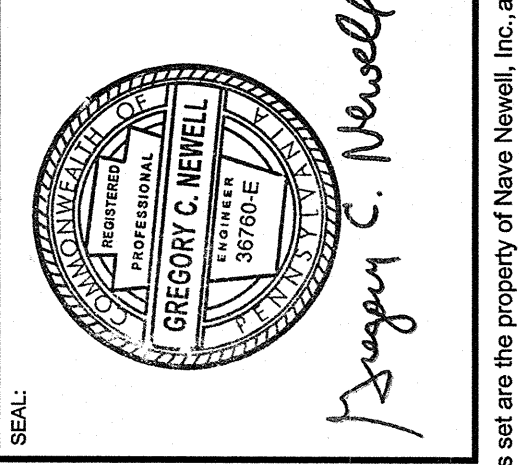
OFFICE ADDITION AREA
SCALE: 1" = 30'

LEGEND

	PROPERTY LINE
	EXISTING EDGE OF PAVEMENT
	EXISTING CURB LINE
	EXISTING BUILDING LINE
	EXISTING MAJOR CONTOUR
	EXISTING MINOR CONTOUR
	EXISTING STORM SEWER LINE WITH INLET
	EXISTING SANITARY SEWER LINE WITH MANHOLE
	EXISTING WATER LINE
	EXISTING FIRE HYDRANT
	EXISTING UNDERGROUND ELECTRIC LINE WITH MANHOLE
	EXISTING LIGHT POLE
	EXISTING AIR CONDITIONING UNIT
	EXISTING GAS LINE
	EXISTING UNDERGROUND TELEPHONE LINE
	EXISTING CABLE LINE
	EXISTING FENCE
	EXISTING TREELINE
	EXISTING TREE
	BUILDING SETBACK LINE
	PROPOSED CURB LINE
	PROPOSED BUILDING
	PROPOSED SIDEWALK
	PROPOSED MAJOR CONTOUR
	PROPOSED MINOR CONTOUR
	PROPOSED YARD DRAIN
	PROPOSED SANITARY FORCE MAIN LINE
	PROPOSED WATER LINE
	PROPOSED UNDERGROUND ELECTRIC LINE WITH MANHOLE
	PROPOSED LIGHT POLE
	PROPOSED GAS LINE
	PROPOSED RETAINING WALL
	PROPOSED TOP OF CURB ELEVATION
	PROPOSED BOTTOM OF CURB ELEVATION
	PROPOSED TOP OF WALL ELEVATION
	PROPOSED BOTTOM OF WALL ELEVATION



date	
scale	
no.	
description	
checked by	
date	
checked by	
date	
checked by	
date	
checked by	

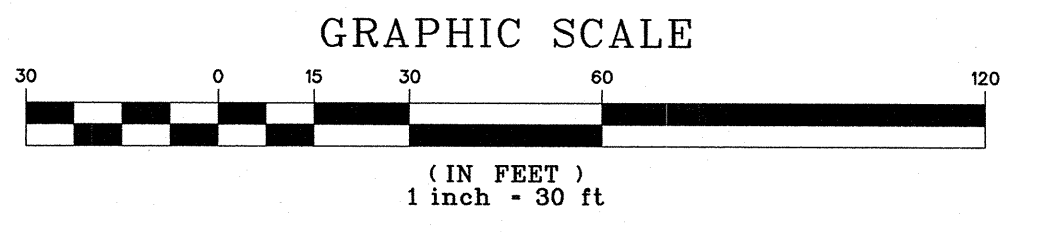


CONSTRUCTION IMPROVEMENTS PLAN

MORGAN PROPERTIES

UPPER MERION TOWNSHIP, MONTGOMERY CO., PA

project no.	2008-039	drawn by:	AWB
date:	8/25/08	chk'd by:	PEL
scale:	1" = 30'	approved by:	TJB
sheet no.			



PROJECT SERIAL NO. 1497540
1497579
1497647
CALL BEFORE YOU DIG!
PENNSYLVANIA LAW REQUIRES
3 WORKING DAYS NOTICE FOR
CONSTRUCTION PHASE AND 10 WORKING
DAYS IN DESIGN STAGE - STOP CALL
Pennsylvania One Call System, Inc.
1-800-242-1776

K:\08Proj\08039\CAD\Plan_Set\Municipal\08039imp.dgn
9/25/2008 1:20:48 PM
30.0000 RI IN.
USER: ehenderson

Copyright © 2008 by Nave Newell, Inc., King of Prussia, PA 19406, phone number 610-265-8323. All rights reserved. The plans, elevations, drawings, illustrations and other material contained within this set are the property of Nave Newell, Inc. and may not be reproduced either in part or wholly, nor are they to be assigned to any third party, without the expressed written permission of Nave Newell, Inc. Written dimensions on the drawings shall have precedence over scaled dimensions. Contractors shall verify, and be responsible for all dimensions and conditions on the job, and this office must be notified of any variations from the dimensions and conditions shown on these drawings. All shop details must be submitted to this office for approval before proceeding with fabrication.