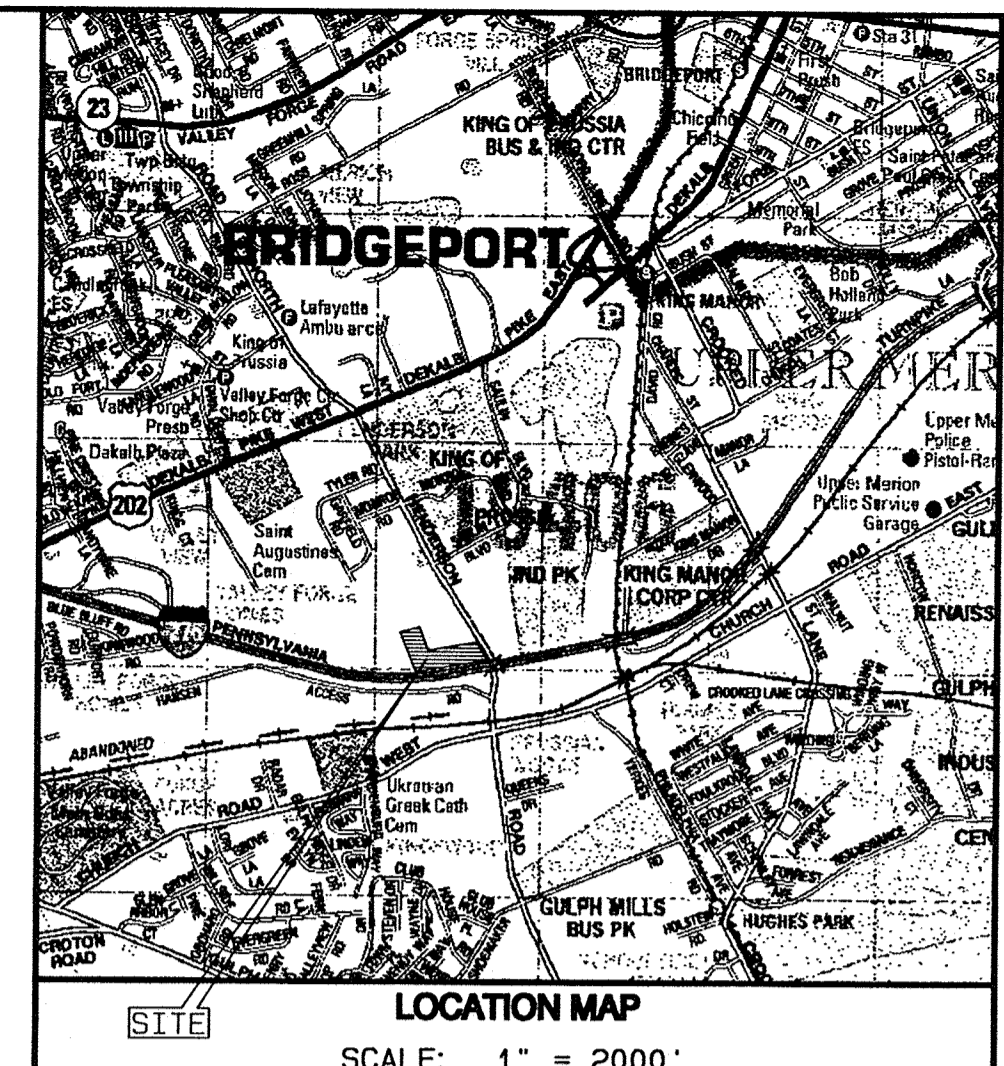
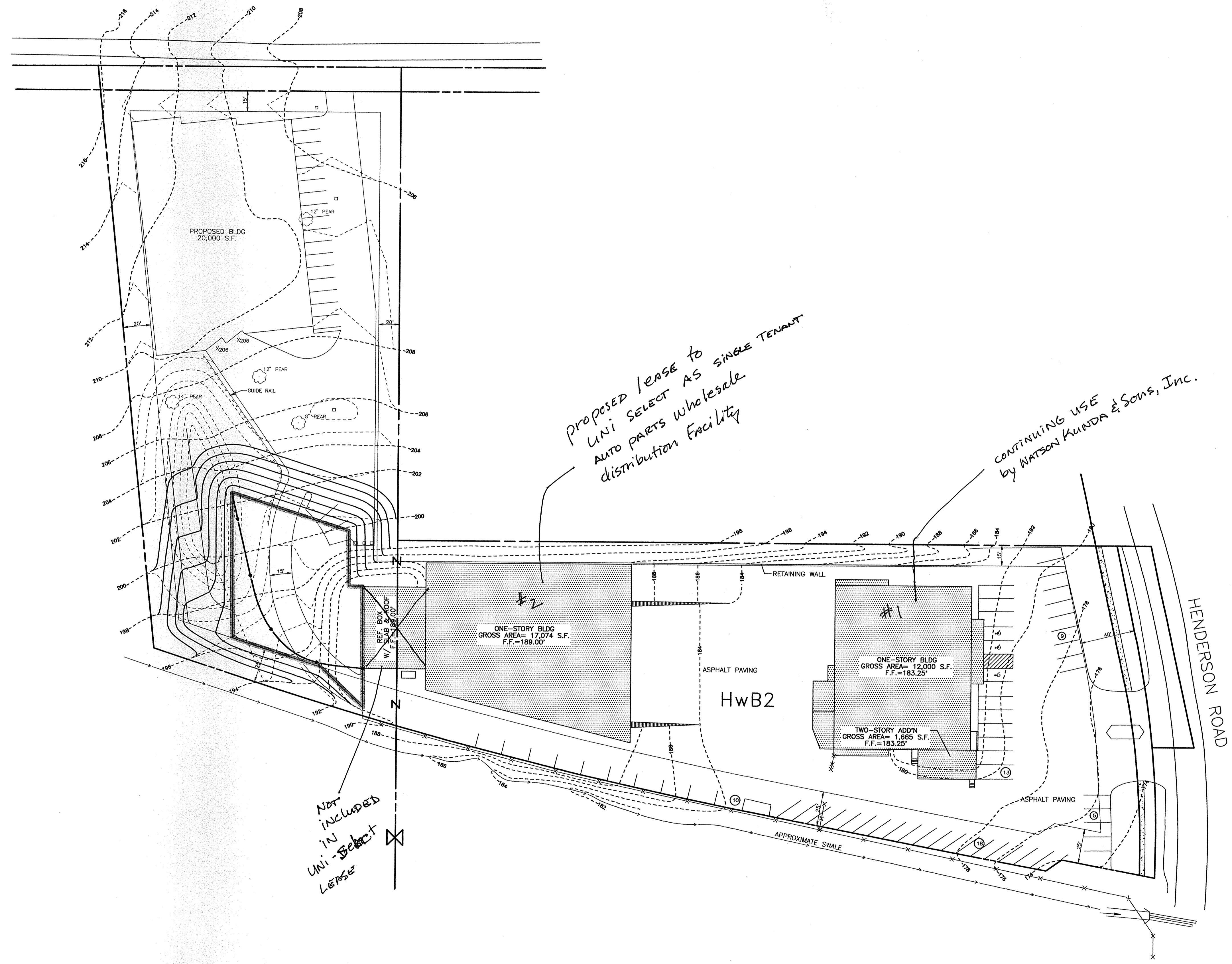


NOTE: ALL LOCATIONS OF EXISTING UTILITIES SHOWN ON THIS PLAN HAVE BEEN DEVELOPED FROM EXISTING UTILITY RECORDS AND/OR ABOVE GROUND EXAMINATION OF THE SITE. COMPLETENESS OR ACCURACY OF LOCATION AND DEPTH OF UNDERGROUND UTILITIES OR STRUCTURES CANNOT BE GUARANTEED. CONTRACTOR MUST VERIFY LOCATION AND DEPTH OF ALL UNDERGROUND UTILITIES AND FACILITIES BEFORE START OF WORK PER PENNSYLVANIA ACT 287 AS AMENDED BY ACTS 38 AND 187. SERIAL NO.



LOCATION MAP
SCALE: 1" = 2000'
Copyright ADC The Map People
Permitted Use Number 20202114

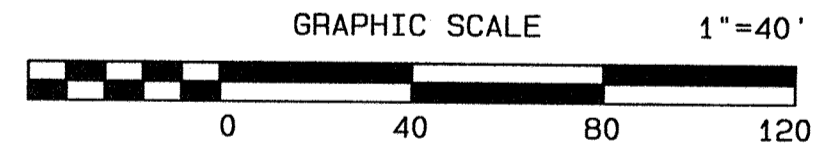


PROPOSED LEASE TO UNI SELECT AS SINGLE TENANT
AUTO PARTS WHOLESALE
distribution Facility

CONTINUING USE
by WATSON KUNDA & Sons, Inc.

Not included
in
Uni-Select
Lease

PLAN ANNOTATED 6/29/09



TOTAL TRACT AREA (TO TITLE LINES): 4.559 ACRES (198,590 S.F.)
NET AREA (TO RIGHT-OF-WAY LINE): 4.395 ACRES (191,484 S.F.)

NO.	3-14-06	INTERNAL REVIEW
NO.	DATE	REVISION COMMENT
STAGING YARD EXPANSION		
MINOR GRADING PERMIT PLANS		
PREPARED FOR		
KUNDA BEVERAGE		
349 SOUTH HENDERSON ROAD		
Upper Merion Township • Montgomery County • Pennsylvania		
Yerkes		
YERKES ASSOCIATES, INC.		
CONSULTING ENGINEERS	LANDSCAPE ARCHITECTS	
SITE PLANNERS	SURVEYORS	
ROSEMONT BUSINESS CAMPUS • BUILDING 3, SUITE 110 919 CONESTOGA ROAD • ROSEMONT, PA 19010 TEL: (610) 525-6200 • FAX: (610) 525-0248		
		C-X-X-X
		SHEET 1 OF 1

OWNER
WATSON KUNDA & SONS, INC.
349 S. HENDERSON ROAD
KING OF PRUSSIA, PA 19406