

SITE LOCATION INFORMATION

SITE NAME:
SWEDELAND RELO
541 FLINT HILL ROAD
KING OF PRUSSIA, PA 19406

SITE NUMBER:
FA 10141471

JURISDICTION:
UPPER MERION TOWNSHIP
MONTGOMERY COUNTY, PA

TAX PARCEL NO.:
58-00-07132-00-1
58-00-07132-01-9

SITE COORDINATES:
N 40° 05' 23.02" (NAD 83)
W 75° 20' 04.21" (NAD 83)

OWNER'S NAME & ADDRESS:
SCHULTZ FRANCIS E JR
460 TIMBER CIRCLE
WAYNE, PA 19087

SITE CHARACTERISTICS

GROUND ELEVATION (AMSL): 140' ± AMSL (NAVD 88)

STRUCTURE TYPE: PROPOSED MONOPOLE

LOCATION OF RADIO EQUIPMENT: GROUND

STRUCTURE HEIGHT (AGL): 130'

ANTENNA HEIGHT (AGL) CENTERLINE: 120'
124'

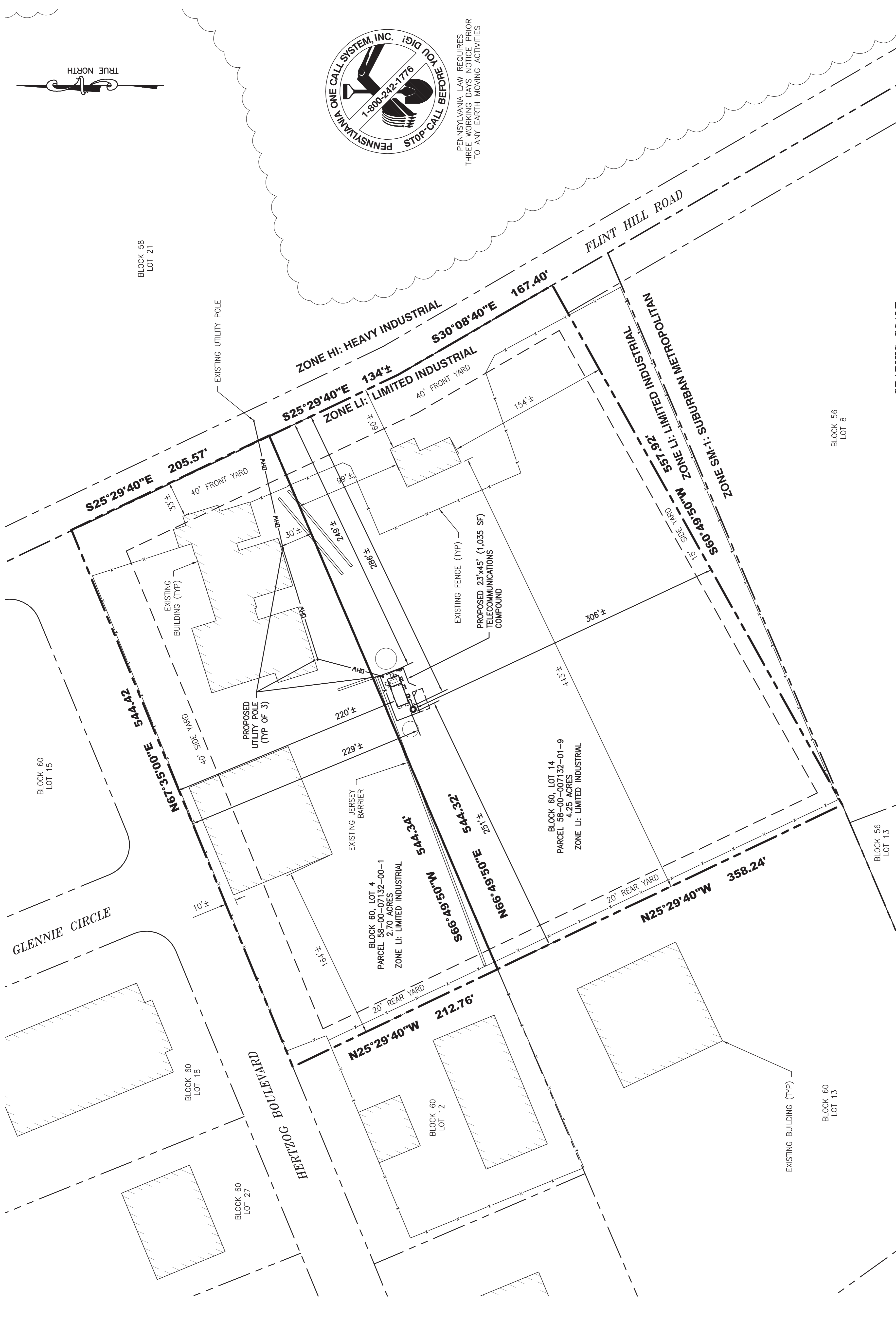
ZONING INFORMATION
PARCEL 58-00-07132-01-9¹

ZONING DISTRICT: LI - LIMITED INDUSTRIAL	
REQUIRED	PROPOSED
MIN. FRONT YARD: 40 FT	NO CHANGE
MIN. REAR YARD: 20 FT	NO CHANGE
MIN. SIDE YARD (STREET): 40 FT	NO CHANGE
MIN. SIDE YARD (OPPOSITE): 15 FT	NO CHANGE
MAX. BUILDING HEIGHT: 50 FT	NO CHANGE
MAX. BUILDING COVERAGE: 75%	NO CHANGE
TOWER HEIGHT: 65 FT	** 126 FT
TOWER SETBACK FRONT YARD: 116 FT	286± FT
TOWER SETBACK SIDE YARD: 116 FT	230± FT
TOWER SETBACK REAR YARD: 96 FT	251± FT

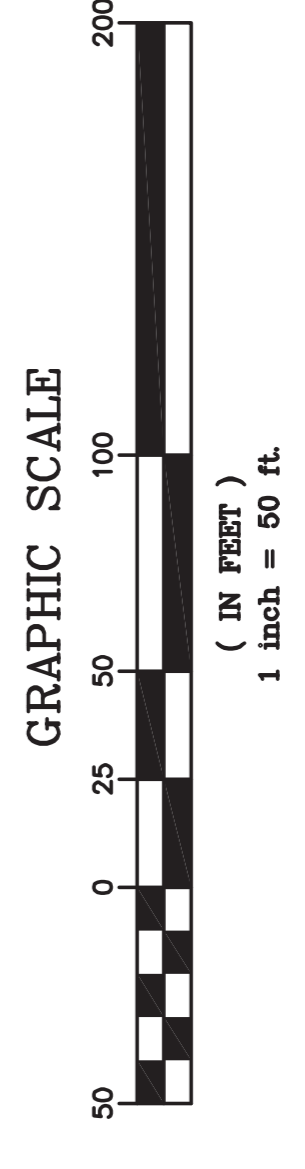
¹ PRE-EXISTING CONDITION
² PARCELS DEEMED MERGED FOR ZONING
** VARIANCE REQUIRED

GENERAL NOTES

- PROPERTY LINE INFORMATION WAS PREPARED USING DEEDS, TAX MAPS AND PLANS OF RECORD AND SHOULD NOT BE CONSIDERED AS AN ACCURATE BOUNDARY SURVEY.
- THE PROPOSED FACILITY WILL CAUSE ONLY A "DE MINIMUS" INCREASE IN STORMWATER RUNOFF. THEREFORE, NO DRAINAGE STRUCTURES ARE PROPOSED.
- NO NOISE, SMOKE, DUST, OR ODOR WILL RESULT FROM THIS FACILITY.
- THE FACILITY IS UNMANNED AND NOT FOR HUMAN HABITATION (THERE IS NO HANDICAP ACCESS REQUIRED).
- THE FACILITY IS UNMANNED AND DOES NOT REQUIRE POTABLE WATER OR SANITARY SERVICE.
- POWER TO THE FACILITY WILL BE MONITORED BY A SEPARATE METER.
- CONTRACTOR TO VERIFY ANTENNA ELEVATION AND AZIMUTH WITH RF ENGINEERING PRIOR TO INSTALLATION.
- CONTRACTOR SHALL LOCATE ALL UTILITIES PRIOR TO EXCAVATING.
- AT THE TIME OF OUR INITIAL SITE VISIT, CONDITIONS INDICATIVE OF FRESH WATER WETLANDS WERE NOT OBSERVED.
- ACCORDING TO F.L.R.M. MAP NO. 42081C0354F, DATED 08/09/99 THE FACILITY IS NOT LOCATED WITHIN A FLOOD PLAIN.



PENNSYLVANIA LAW REQUIRES THREE WORKING DAYS NOTICE PRIOR TO ANY EARTH MOVING ACTIVITIES



SITE PLAN
SCALE: 1" = 50'

 BECHTEL COMMUNICATIONS, INC. 200 NORTH WARNER ROAD KING OF PRUSSIA, PA 19406	 ADVANTAGE ENGINEERS COMMUNICATIONS ENVIRONMENTAL/GENERALIST 1025 ANDREW DRIVE, SUITE 100 WEST CHESTER, PA 19380 PHONE (484) 403-9779	 at&t NEW CINGULAR WIRELESS PCS, LLC 200 NORTH WARNER ROAD KING OF PRUSSIA, PA 19406	NO. 0 DATE 05/10/13 REVISIONS BY JMD/JPB CHECKED BY JMD/JPB DESIGNED BY JPB DRAWN BY MBW	NO. 1 DATE 04/12/13 REVISIONS BY JMD/JPB CHECKED BY JMD/JPB DESIGNED BY JPB DRAWN BY MBW	NO. 2 DATE 05/10/13 REVISIONS BY JMD/JPB CHECKED BY JMD/JPB DESIGNED BY JPB DRAWN BY MBW	NO. 3 DATE 05/10/13 REVISIONS BY JMD/JPB CHECKED BY JMD/JPB DESIGNED BY JPB DRAWN BY MBW	NO. 4 DATE 05/10/13 REVISIONS BY JMD/JPB CHECKED BY JMD/JPB DESIGNED BY JPB DRAWN BY MBW	NO. 5 DATE 05/10/13 REVISIONS BY JMD/JPB CHECKED BY JMD/JPB DESIGNED BY JPB DRAWN BY MBW	NO. 6 DATE 05/10/13 REVISIONS BY JMD/JPB CHECKED BY JMD/JPB DESIGNED BY JPB DRAWN BY MBW
			SCALE: AS SHOWN						
NEW CINGULAR WIRELESS PCS, LLC SITE PLAN DRAWING NUMBER Z-1			REV. 0						